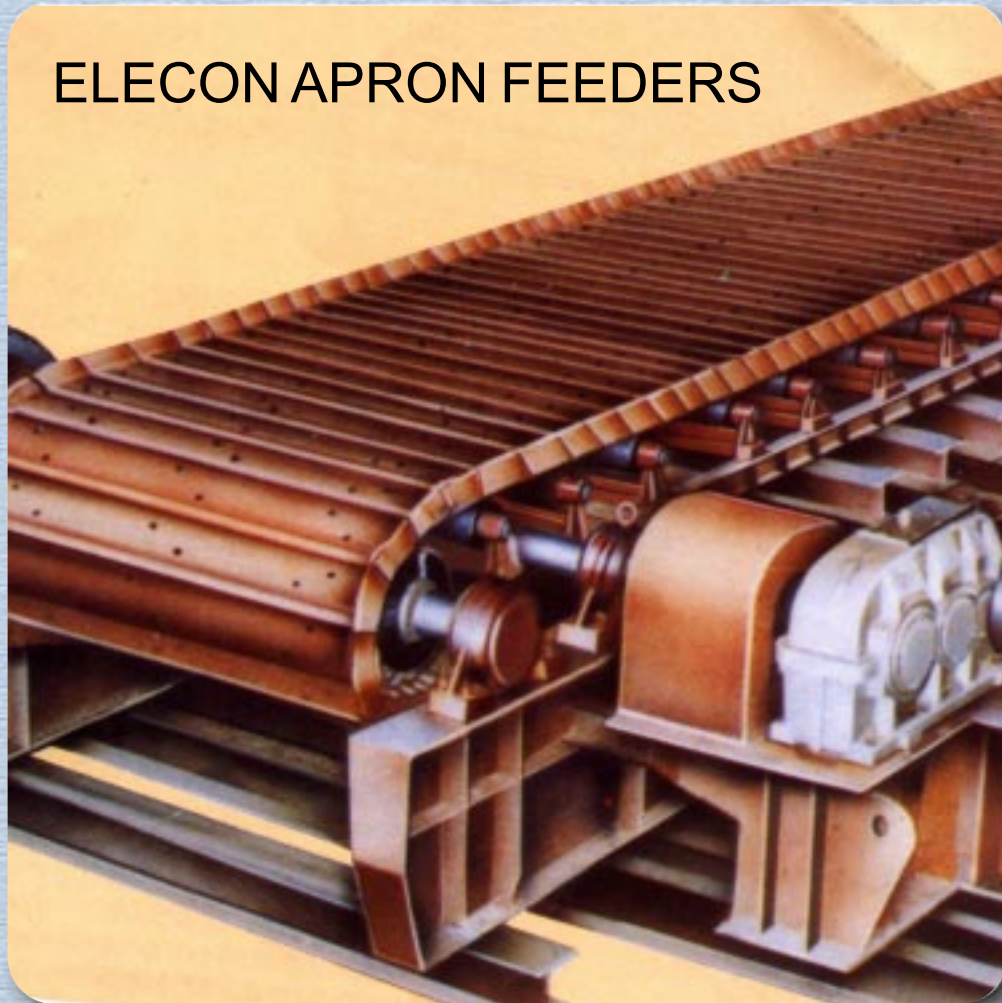
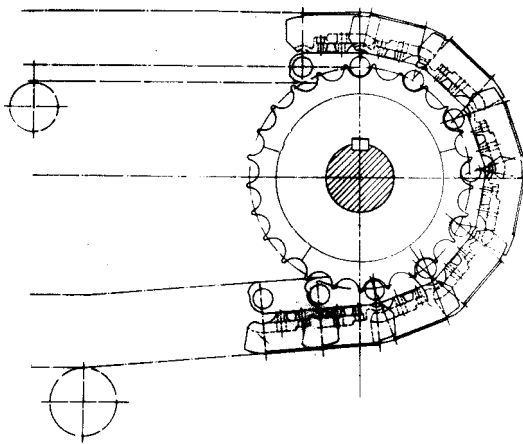
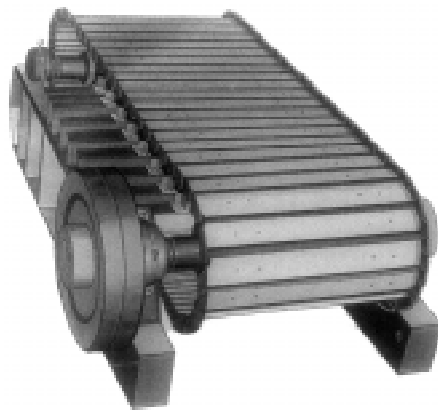




## ELECON APRON FEEDERS



# DESIGN AND CONSTRUCTION FEATURES OF ELECON APRON FEEDERS



Sprocket & Chain Assembly

## H MACHINE DESIGN :

Elecon Apron Feeders are of extremely rugged construction and are specifically designed to withstand the shock loading of large lumps being dumped in the hopper above the feeder. These machines can also be employed for drawing material from hoppers and delivering it at controlled rates to succeeding belt conveyors. Apron Feeders have a considerable effect on the efficiency of crushing operations as they ensure that the feed is introduced to the crusher over the full length of the crushing cavity at a steady and controlled rate.

## H BEARINGS :

Heavy-duty spherical roller type bearings support the head and tail shafts, mounted in pedestals. Those for supporting the head shaft are bolted to the main longitudinal members while those for supporting the tail shaft are mounted in slides, permitting adjustment of the sprocket centres to take up chain slack.

## H SPROCKETS :

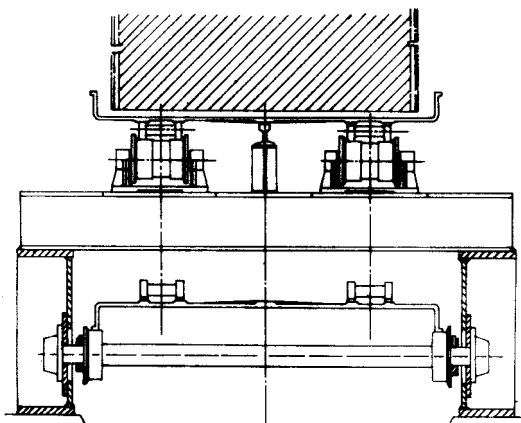
Segmental, cast steel sprockets are cast and machined and jig drilled to fit their respective mounting hubs which are keyed to the drive shaft.

## H CHAIN AND CARRYING ROLLERS :

Chains of the type used for tractors are fitted, having forged steel links and high-carbon steel pins capable of operating under the most arduous conditions, without the need for lubrication. Steel support rollers fitted with grease lubricated bearing bushes are provided beneath the chains. Mn Cast Steel Chains can also be provided upon request.

## H APRON PLATES :

Apron feeder pans are designed to suit specific requirements, considering duty factors and type of material. Pans are ribbed for strength and have flanged ends. Sufficient overlap is provided restricting spillage at the moment when passing around the sprocket. Pans can be supplied either in cast manganese steel or pressed mild steel or of welded plate construction, to suit the nature material to be handled.



Cross Section



#### H SKIDDER BAR :

A skidder bar is provided centrally between the chains, beneath the apron where the shock loads occur. The skidder bar is not normally in contact with the apron and is merely to prevent distortion of the apron plates.

#### H RETURN ROLLERS :

Rollers are provided to support the slack side of the moving apron to relieve the radial load on the head and tail shaft bearings.

#### H LUBRICATION :

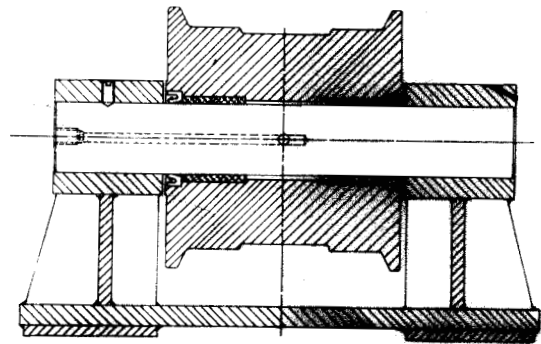
A hand-operated twin-line or centrally motorised lubrication system is incorporated in the design of the machine to ensure regular service at all grease points. Ready access is available to all parts for maintenance purpose.

#### H DRIVE :

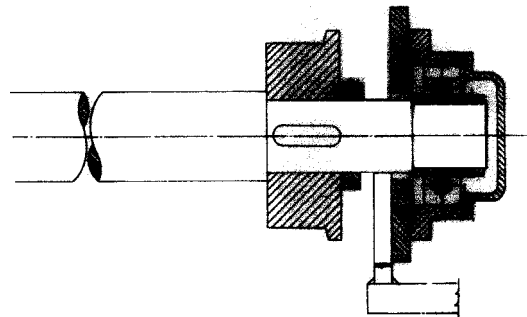
The necessity to vary the speed of the moving apron is found to be a useful feature, to ensure control over the capacities. The final drive to the shaft can therefore be supplied with a DC motor, or hydraulic motor, or other variable speed control systems.

#### H DRIBBLE CONVEYOR :

Elecon Apron Feeders also incorporate a dribble conveyor, under the return strand of the apron feeder. The dribble conveyor picks up dust and fines dropping from the return strand, thus eliminating manual cleaning and saving considerable man-hours. Dribble conveyors are either belt type or drag chain, with an independent drive. Material collected by the dribble conveyor is discharged back into the main stream.



Carrying Roller Assembly



Return Rollers Assembly

Please furnish the following data for selection :

MATERIAL	CAPACITY	PROFILE	HOPPER
TYPE	DESIGN	HOR C/C LENGTH	SLOT OPENING
LUMP SIZE & DISTRIBUTION	RATED	VERTICAL LIFT	DIMENSIONAL SKETH
BULK DENSITY		WIDTH OF PAN	

## National Branches :

### Ahmedabad

Tel: +91 79 26406683/26406684/26406685  
 Fax: +91 79 2640 1363  
 Email : salesahd@elecon.com

### Bangalore

Tel: +91 80-25290082, 25250219, 25252925  
 Fax: +91 80-25251834  
 Email : salesbgl@elecon.com

### Bilaspur

Tel: +91 7752 247723 / 247625  
 Fax: +91 7752 247720  
 Email : salesbil@elecon.com

### Chennai

Tel: +91 44 24349237/24349497/24322455  
 Fax: +91 44 2434 9643  
 Email : saleschn@elecon.com

### Indore

Tele Fax: + 91 731 257 6100  
 Email : salesindr@elecon.com

### Kolkata

Tel: +91 33 2476 1861 / 2476 0876  
 Fax: +91 33 2476 1831  
 Email : saleskol@elecon.com

### Madurai

Tel: +91 4549 293488  
 Email : salesmadu@elecon.com

### Nagpur

Tel: +91 712 6642600 / 6642 601  
 Fax: +91 712 6642 622  
 Email : salesnag@elecon.com

### Mumbai

Tel: +91 22 22821315/22820725/22821365  
 Fax: +91 22 2287 0791  
 Email : salesbom@elecon.com

### New Delhi

Tel: +91 11 2341 4340 / 2341 4341  
 Fax: +91 11 2370 9046  
 Email : salesdel@elecon.com

### Pune

Tel: +91 20 4019 1400  
 Fax: +91 20 4019 1411  
 Email : salespune@elecon.com

### Raipur

Tele Fax: +91 771 2259 321 /23/24/30  
 Email : salesrai@elecon.com

### Hyderabad

Tele Fax: +91 40 64561199  
 Email : salessec@elecon.com

### Vadodara

Tel: +91 265 2313 670  
 Tele Fax: 91 265 2312 972 / 2312 980  
 Email : salesvad@elecon.com

### Vallabh Vidyanagar

Tel. +91 02692-231125 / 227559/227549/ 227560  
 E mail : salesvvn@elecon.com

## Service Center:

### Elecon Engg. Co. Ltd.

Plot No.77,GIDC Mithrohar,  
 Gandhidham, Kutch, Gujarat - 370 201  
 Mo.: +91 82003 42047  
 Email: drsuthar@elecon.com

### Elecon Engg. Co. Ltd.

S.F.No.44/3, Madurai Road,  
 T Kunnathur Village, Peraiyur Taluk,  
 Madurai, Tamilnadu - 625708  
 Mo.: +91 99406 37009  
 Email: pramchandran@elecon.com

## International Network:

### MIDDLE EAST :

#### ELECON MIDDLE EAST FZCO, Dubai

Phone : +97 146 091 424, +97 146 091 425  
 Fax : +97 146 091 426  
 E-mail : salesme@elecon.com

### FAR EAST :

#### ELECON SINGAPORE PTE. LTD.

Phone : +65 622 782 58  
 Fax : +65 622 789 42  
 E-mail : salesap@elecon.com

## radicon

### AUSTRALIA

Radicon Transmission  
 ( Australia) Pty. Ltd.  
 Tel: +61 488 054 028  
 Fax: +61 295 213 522  
 salesap@elecon.com  
 www.radicon.com

### UNITED KINGDOM

Radicon Transmission UK LTD.  
 Tel: +44 (0)1484 465800  
 Fax: +44 (0)1484 465801  
 sales@radicon.com  
 www.radicon.com

### THAILAND

Radicon Transmission Thailand Ltd.  
 Tel : +66 38 459 044  
 Fax: +66 38 213 655  
 salesap@elecon.com  
 www.radicon.com

### UNITED STATES OF AMERICA

RADICON USA  
 Tel. 1-847-593-9910  
 Fax. :1-847-593-9950  
 salesusa@radicon.com  
 www.radicon.com

### MIDDLE EAST

Radicon Transmission FZE  
 Tel: + 97165527950  
 Fax: + 97165527951  
 radicon@eim.ae  
 www.radicon.com

## benzlers

### SWEDEN

AB Benzlers  
 Tel: + 46 42 18 68 00  
 Fax: + 46 42 21 88 03  
 info@benzlers.com  
 www.benzlers.com

### FINLAND

O.Y. Benzler AB  
 Tel: +358 9 340 1716  
 Fax: +358 10 296 2072  
 info@benzlers.com  
 www.benzlers.com

### NETHERLANDS

Benzler-TBA BV  
 Tel : +31 077 324 5900  
 Fax: +31 077 324 5901  
 mail@benzlers.com  
 www.benzlers.com

### DENMARK

Benzler Transmission A/S  
 Tel: +45 36 34 0300  
 info@benzlers.com  
 www.benzlers.com

### GERMANY

Benzler Antriebstechnik  
 Gmbh  
 Tel: +49 0800 350 4000  
 Fax: +49 0800 350 4001  
 mail@benzlers.com  
 www.benzlers.com

radicon

with you at every turn

benzlers

with you at every turn

Manufactured by:

**ELECON ENGINEERING CO. LTD.**

Post Box # 6, Anand - Sojitra Road, Vallabh Vidyanagar - 388 120, Gujarat, INDIA

**Tele.:** +91 2692 237016 / 236 521 / 236 590 **Fax:** +91 2692 227 020 **E-mail:** infomhe@elecon.com

**Website:** www.elecon.com | **CIN:** L29100GJ1960PLC001082



For information  
and enquiry